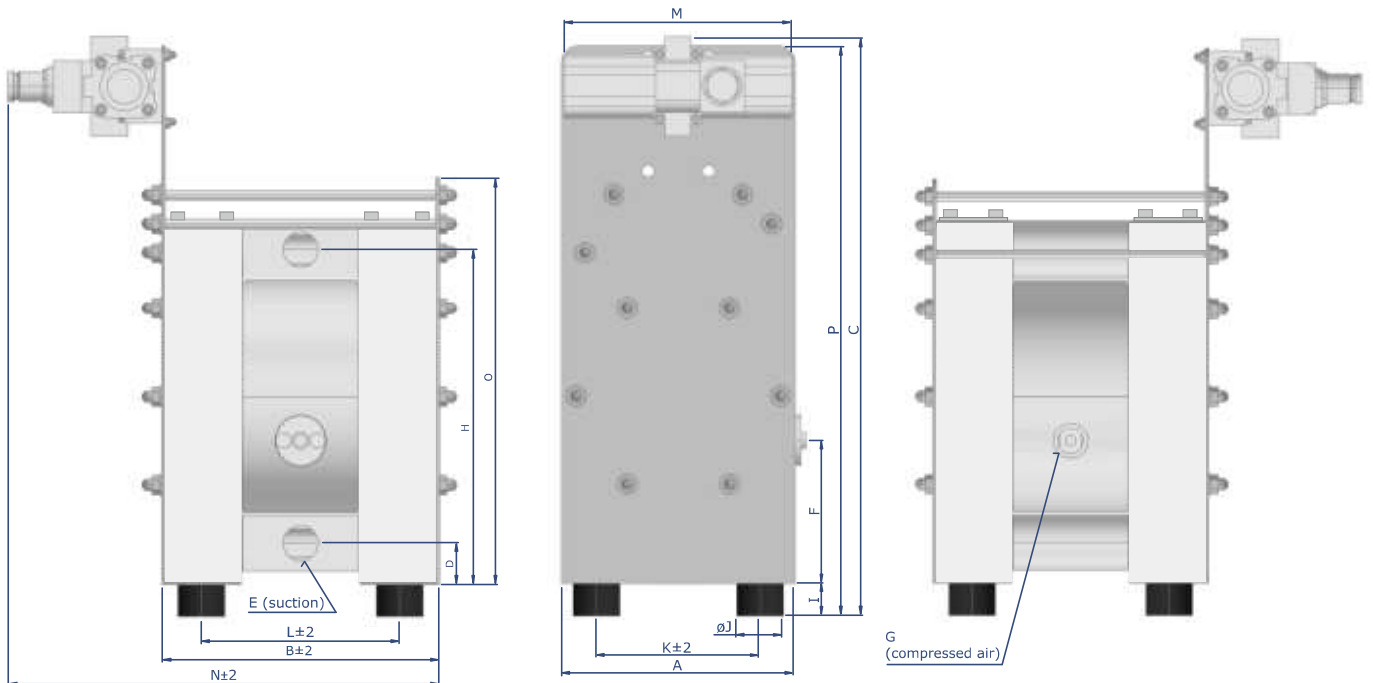


## HIGH PRESSURE PUMPS



HP - High Pressure pump station for filter press feeding is a very compact unit that can be mounted directly to the filter press. The design and function allow the user a straightforward pressing of slurries. A pressure regulator is already mounted to the unit. The pump stations are based on the standard DELLMECO pumps from machined polyethylene (PE). An external pressure booster doubles the delivery pressure. For example, with available air pressure of 7bar, the delivery pressure will be maximum 14bar.

### DIMENSIONAL DRAWING - PLASTIC PUMPS



DIMENSIONS	A	B	C	D	E	F	G	H	I	øJ	K	L	M	N	O	P
DM 15 /55	153	183	335	25	G 1/2"	87	R 1/4"	217	18	30	112	136	195	321	253	333
DM 25/125	200	238	469	35	G 1"	123	R 1/4"	287	28	40	140	170	195	377	349	462
DM 40/315	270	318	600	42	G 1 1/2"	109	R 1/2"	388	30	60	190	227	290	529	500	600
DM 50/565	350	391	690	45	G 2"	158	R 1/2"	485	30	60	270	282	404	612	560	690

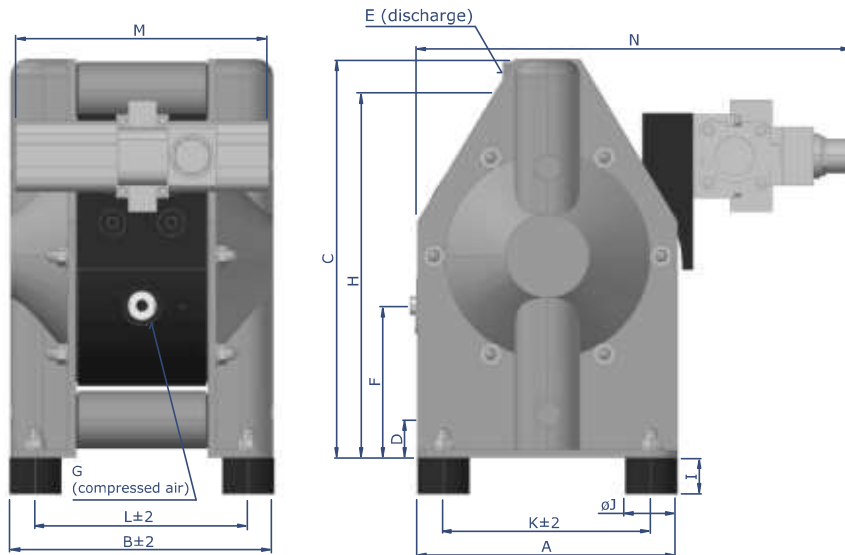
## HIGH PRESSURE PUMPS



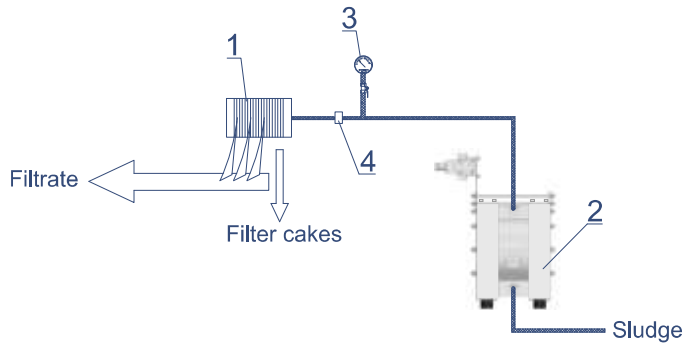
### INSTALLATION

As this station works self-regulating, an additional device for regulating the flow quantity is not necessary. Just mount it to the filter-press, connect it - ready. Even the pressure regulator for the air supply is included. For monitoring the filling level of the filter-press, stroke sensors and stroke counters are available. Pump is self priming, can run dry.

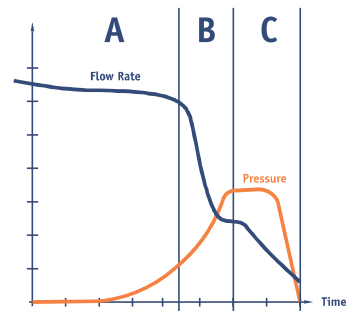
### DIMENSIONAL DRAWING - METAL PUMPS



DIMENSIONS	A	B	C	D	E	F	G	H	I	øJ	K	L	M	N
DM 20/75	150	173	228	19	G 3/4"	84	R 1/4"	209	18	30	118	139	195	297
DM 25/125	200	202	302	27	G 1"	115	R 1/4"	279	18	30	160	164	195	351
DM 40/315	270	267	412	34	G 1 1/2"	100	R 1/2"	380	28	40	213	213	290	372
DM 50/565	350	345	538	48	G 2"	115	R 1/2"	493	30	60	286	285	404	573

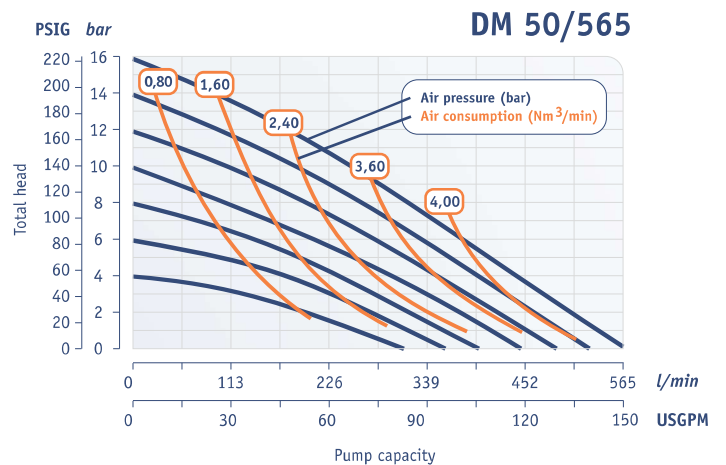
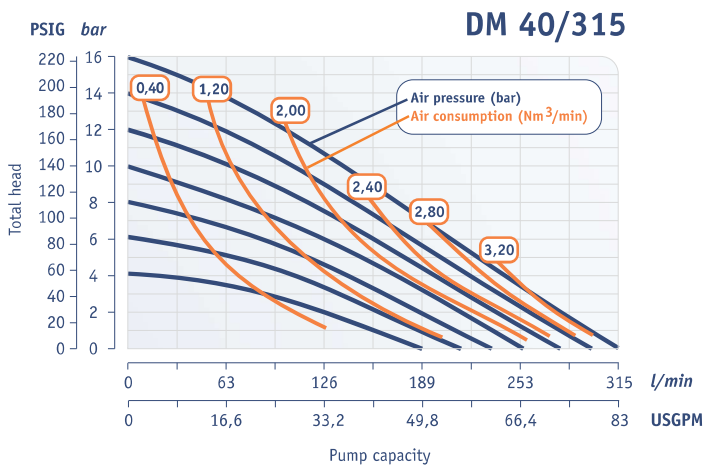
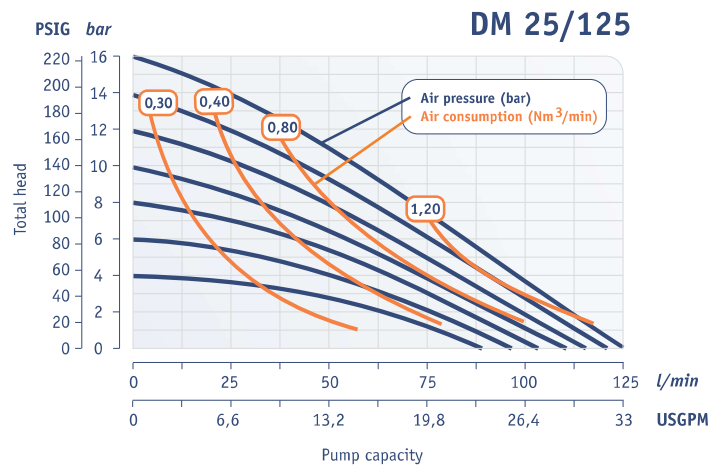
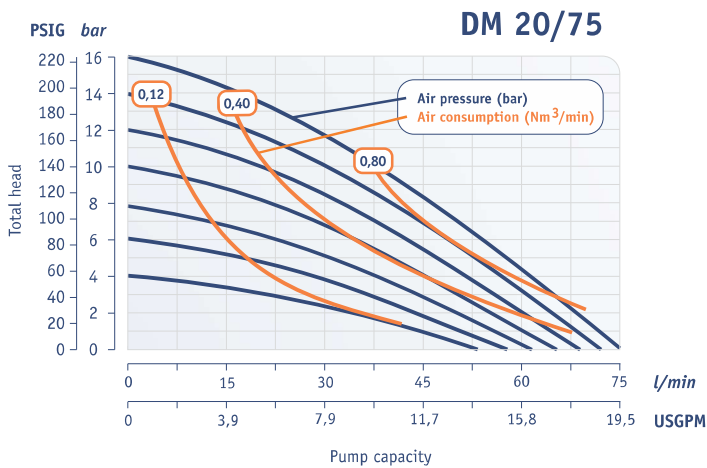


Part no.	Name
1	Filter press
2	Filling and pressure maintenance pump
3	Pressure gauge
4	Bursting disk



Typical operating cycle of filter press

- A – High capacity filling** allowing filter cake formation.
- B – End of filling**, filtration resistance, capacity reduction.
- C – Pressure maintenance**, filter cake formed, high filtration resistance, reduction of filtrate flow to minimum flow at end of pressing.



## HOW TO SELECT PUMPSIZE

At enter flow rate (e.g. 75l /min and pressure 14 bar).  
A DM 25/125 will be suitable with 7 bar supplied compressed air.